

LEDNeon-Flex ACCENT LIGHTING



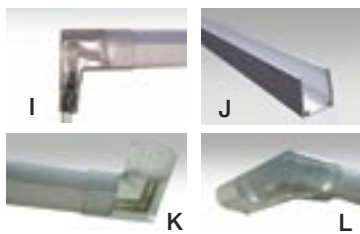
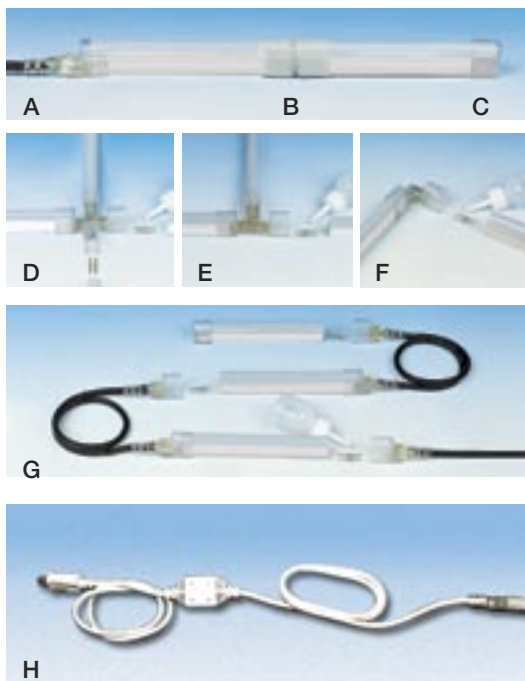
ENERGY COST COMPARISON

LEDNEON-FLEX VS. TRADITIONAL GLASS

REGION	ANNUAL ENERGY COST GLASS NEON	ANNUAL ENERGY COST LEDNEON FLEX	ANNUAL SAVINGS	CUMULATIVE SAVINGS	WATTAGE BLUE, GREEN	WATTAGE RED, YELLOW
USA Midwest (\$0.08/kWh)	\$1,839.60	\$605.40	\$1,234.20	\$12,342 (over 10 years)	2W**	1.44W**

* Based on 300 feet 2.88W/ft. red LED. Energy savings are based on local costs per kilowatt hour, 24 hours/day, 365 days/year. Energy usage: traditional glass neon – 8.75W/ft, NEONFLEX – 1.44W/ft ** 120V

CONNECTORS AND POWER SUPPLIES



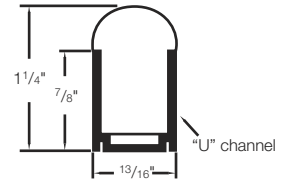
- A. 180° Power Connector
- B. Splice Connector w/Shrink Tube
- C. End Cap - Dead End
- D. "X" Connector
- E. "T" Connector
- F. "L" Connector
- G. 24" Middle Connector Jumper Cable
- H. 5' Power Cord w/Plug and Converter
- I. 90° Power Connector
- J. Mounting Channel
- K. 90° Inside Corner Connector
- L. 90° Outside Corner Connector

Features

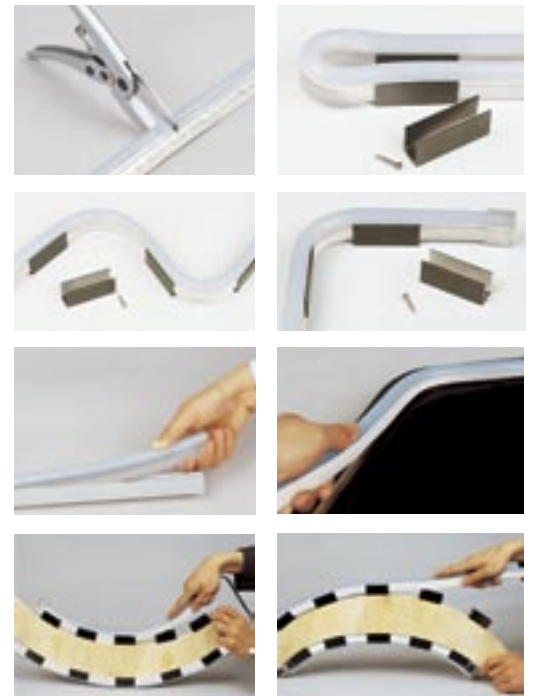
- Can save up to 70% in energy costs over traditional glass neon: 1.44W per linear foot/120V
- Cool-to-touch, low-heat LEDs available in Blue, Green, Orange, Red, and Yellow; 40,000-hour life for Blue, 100,000 hour life for other colors
- LEDs spaced ½" apart emit light uniformly
- Oval-shaped flexible plastic sleeve is field-cutttable and bendable for breakage-free installations
- Available in 150-foot and 30-foot rolls, 120/24V
- Large variety of connectors for easy and versatile in-field installation options

Labels

- UL Listed
- Rated for wet location



INSTALLATION EXAMPLES



NEONFLEX ORDERING INFORMATION

See Specification Sheet for complete ordering information.

LEDNEON-FLEX ORDERING SAMPLE

DESCRIPTION	ROLL LENGTH	LED SPACING	LED COLOR	VOLTS
NE-FX-150-.5-B-120=				
NEFX + 150 + .5 + B + 120				
LED Neon Flex + 150" + .5" O.C. + Blue + 120 V / 360W				



Lumen8 Lighting, Inc.
220 Norfinch Drive
Toronto, Ontario
Canada M3N 1Y4

Cando@GoLED.com
tel: 416-663-2973
toll free: 1-877-356-1835
fax: 416-663-9692
www.GoLED.com