



LEDGen3 Drive Engine Rebel

Model Number: Gen3Rebel

SPECIFICATIONS

Specifications:

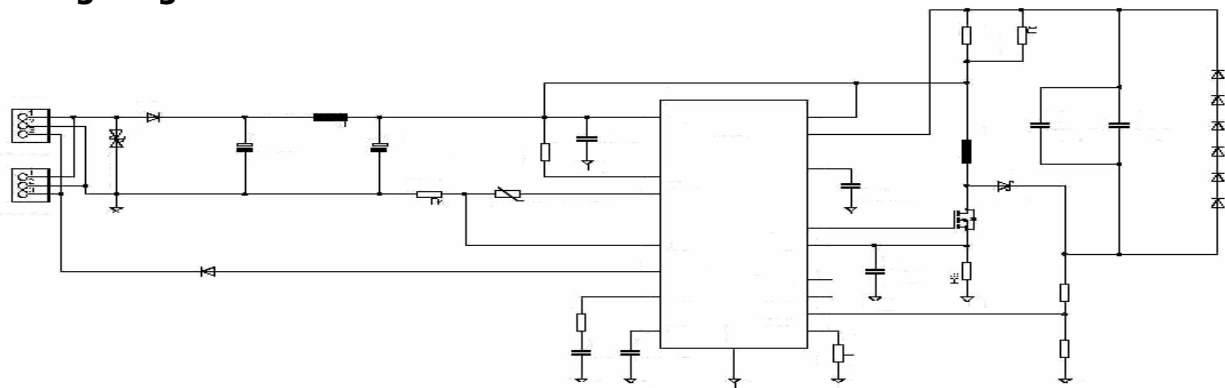
Operating Voltage:	10-36 VDC @ 700 mA
LED Quantity:	6 Luxeon® Rebel
Light Output:	780 - 1050 lumens
Colour Temperature:	6500 K
Operating Temperature:	minus 40° ~ 50°C
Power Consumption:	12 - 18 Watts @ 24 VDC
Pin Type:	MOLEX43650-03
Diameter:	N/A
Length:	272 cm X 19.2 cm
Weight:	TBA



Features:

- Aluminium Clad Circuit Board Assembly
- 10 to 36 VDC with PWM Control
- Throttle Back Thermal Auto Correction
- Reverse Polarity Protection
- Vibration Resistant
- Maintenance Free
- Contains no mercury
- Pulse Width Modulation PWM Dimming Control

Wiring Diagram:



Lumen8 Lighting Inc.
 10 Sandford Fleming Dr.
 Collingwood , Ontario L9Y-4V7

Contact Information:
 Cando@GoLED.com
 Tel: 705-443-8445
 Fax: 705-443-8009